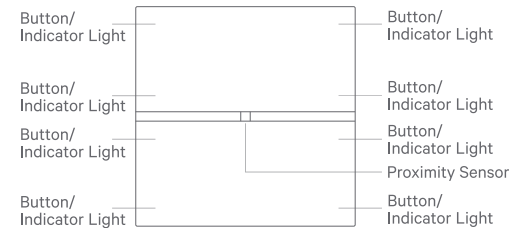


Product introduction

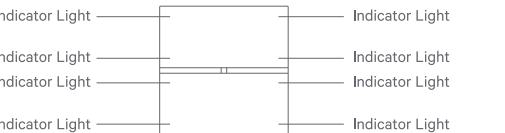
Silver Phoenix Pro Smart Wall Switch utilizes ZigBee wireless communication protocol and supports functions such as color temperature adjustment and brightness adjustment, enabling smart lighting control, intelligent scenes, and linked binding.

* The diagram represents a 4-gang switch.



1

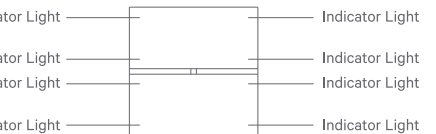
Indicator Light Instruction (ZigBee Mode)



2

Indicator Status	Fast Flashing (10 flashes per second)	Connecting to Home Center nearby
	Slow flashing (1 flash every 2 seconds)	Successfully connected to Home Center
	Medium flashing (4 flashes per second)	Failed to connect to Home Center

On-off Status Indicator State

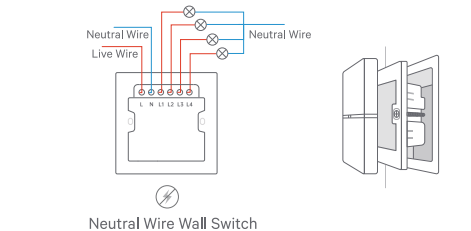


Indicator Status	White On	The device connected directly to it is powered on
	Yellow On	The device connected directly to it is powered off

For wall switches with different numbers of gangs, there are specific differences in the functions of the indicator lights. For example, in a 4-gang wall switch, the indicator lights of the upper-left and upper-right buttons are used to indicate the switch status, while the indicator lights of the remaining buttons will flash during interaction to provide operational feedback.

3

Physical Installation

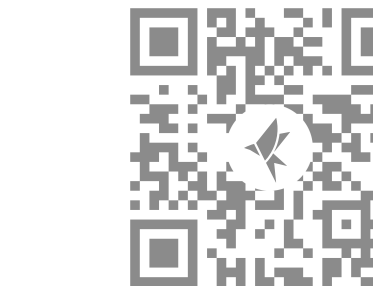


1. Before installation, make sure the power is turned off;
 2. Align the rear housing holes and complete the wiring. Tighten the wiring screws: Connect the "L" hole to the live wire, "N" hole to the neutral wire, and "L1/L2/L3/L4" holes to the light wires;
 3. Use screws to secure the wall switch in the wall junction box, and then reattach the front panel of the wall switch.
- * Please refer to the load power on page 10 for the attached table of specifications.
- * Different models of wall switches may have variations in wiring hole positions. Please refer to the actual product for accurate positioning.

4

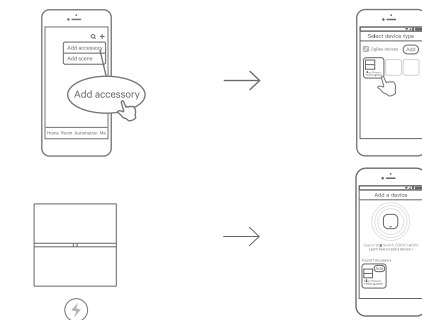
Download and Install App

Download Terncy app from application markets or scan the QR code below. Follow the direction in the app to connect your accessory to Home Center.



5

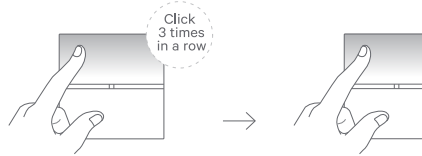
Add Device in Terncy App



1. Launch Terncy app and log in;
2. Click on the "Add Device" page;
3. Turn on the power to the switch, and the indicator light will start flashing;
4. The app will automatically detect the accessory typically within 10 seconds.

6

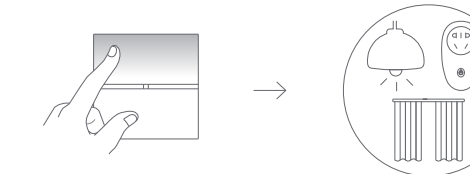
Reset to Factory Default



1. The switch is powered on;
2. Tap the top-left button 4 times, and on the 4th tap, press and hold until the indicator light flashes, then release;
3. The network configuration information of the switch will be cleared and can be added again.

7

Automation



One-button control for multiple lights, sockets, and curtains.

8



Terncy WeChat Account

Contact Us

Online Service: <https://www.xiaoyan.io/service>
Service Call: 400-920-2823
E-mail: support@xiaoyan.io
Shanghai Xiaoyan Technology Co., Ltd.
Room 502, Building E, No.666, Shengxia Road,
Shanghai, China

Automation



When approaching the switch,
the indicator light will automatically illuminate.

Specifications

Product Type	Without Neutral Wire	With Neutral Wire	2/3/4 gang switch with Neutral Wire
Total power of resistive load (AC 220V)	5W≤, <500W	≤1500W	≤2800W
Total power of capacitive load (AC 220V)	5W≤, <200W	≤500W	≤500W

Load specification reference

Load Device Type	Resistive classification
LED lighting	Capacitive
Energy-saving lamp/ fluorescent lamp	Capacitive
Incandescent lamp/ tungsten filament lamp	Resistive
Electric water heater	Resistive
Bathroom heater	Resistive

For reference only, please refer to the markings of the original equipment manufacturer.

Specifications

Product Name: Silver Phoenix Pro Smart Wall Switch
Product Model: TERNCY-WS06-D4
Product Dimension: 86×88×36.5mm
In Wall Dimension: 62.5x62.5x28mm
Working Temperature: -10-45℃
Humidity: ≤80%
Working Voltage: 110-220V AC 50/60HZ
Standards: GB/T-26572-2011

Dos & Don'ts

1. Do not submerge or clean the product ;
2. Please keep the product away from fire sources, high temperatures, and other extreme environments.

Note

Xiaoyan Tech Co., Ltd reserves the right to update the content in the manual. Please refer to the latest version for the most accurate information.

Warranty Card

Xiaoyan's after-sales service includes:

Xiaoyan Tech shall remove any physical defects inherent in the device which are listed on the warranty card, free of charge, by replacing (at the sole discretion of Xiaoyan Tech) the defective device within the period of 15 days from the date of reception by the consumer, and by repairing the defective components of the device within the period of 24 months from the date of reception by the consumer.

* The warranties may be varied in different countries and regions.

The Warranty Applies to:

1. Surface damages resulting from mishandling during transport or defects inherent in material or structure of the products;
2. Failure of the buttons or indicator lights;
3. Failure of wireless communication.

The Warranty Does Not Apply:

1. When the warranty period expired;
2. To damages resulting from repairing and introducing alterations by unauthorized persons;
3. To damages caused by using accessories not recommended by the manufacturer;
4. To damages resulting from other irresistible causes.



Silver Phoenix Pro
Smart Wall Switch Manual

