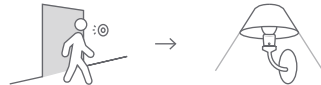


Automation

(This function works properly with HomeKit **only** when meeting the requirements in Notes 2 of the latter part.)



Light will be lit up automatically when someone passes by.

7

Automation

(This function works properly with HomeKit **only** when meeting the requirements in Notes 2 of the latter part.)



Turns on lights with just one click of Awareness Switch.

8

Automation

(This function works properly with HomeKit **only** when meeting the requirements in Notes 2 of the latter part.)

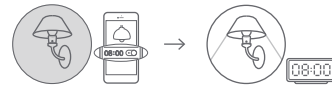


Light will be lit up automatically when ambient lights are low.

9

Automation

(This function works properly with HomeKit **only** when meeting the requirements in Notes 2 of the latter part.)



Set a timer to turn lights on or off.

10

Automation

(This function works properly with HomeKit **only** when meeting the requirements in Notes 2 of the latter part.)



Light will be lit up automatically when opening the door.

11

Notes 1

1. Do not soak or wash your devices.
2. Ensure the rated power of the bulb connected to the Smart Light Socket is lower than 150W.
3. Keep products away from fire, high temperature or any other extreme environment.

Notes 2

Home Center is required to enable Smart Light Socket to work with HomeKit technology. Visit <http://www.xiaoyan.io> for more details.

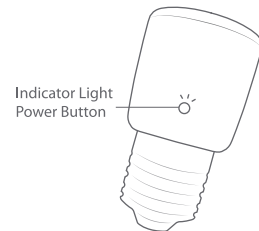
12



Manual of Terncy Smart Light Socket

Smart Light Socket Introduction

Terncy Smart Light Socket is a ZigBee endpoint accessory, that connects to Terncy Home Center ZigBee hub. It transforms any standard light into a smart light.



1

Indicator Light State



2

State	Green LED fast flashing (10 flashes per second)	Connecting to Home Center nearby
	Green LED slow flashing (1 flash every 2 seconds)	Successfully connected to Home Center
	Green LED medium flashing (4 flashes per second)	Failed to connect to Home Center

Download and Install App

Download Terncy app from application markets or scan the QR code below. Follow the direction in the app to connect your accessory to Home Center.



3

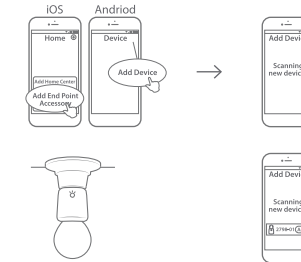
Physical Installation



4

1. Cut down the power before connecting Smart Light Socket.
2. Screw the Smart Light Socket into the bulb holder.
3. Screw a desired light bulb into the Smart Light Socket.

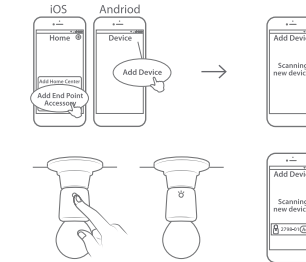
Setup Accessory for The First Time



5

1. Navigate to "Add Device" page in the app.
2. Apply power to the Smart Light Socket.
3. The app will automatically detect the accessory, typically within 5 seconds.

Setup Accessory Again



6

1. Navigate to "Add Device" page in the app.
2. Press and hold the button for 6 seconds. The LED will start flashing green.
3. The app will automatically detect the accessory, typically within 5 seconds.



WeChat official account

Contact Us

Online Support: <http://www.xiaoyan.io/service>

E-mail: support@xiaoyan.io

Manufacturer: Shanghai Xiaoyan Technology Co., Ltd.

Address: Room 503, Building B, NO.2305, Zuchongzhi Road, Shanghai, China

Warranty Card

Xiaoyan's after-sales service includes:

Xiaoyan Tech shall remove any physical defects inherent in the device which are listed on the warranty card, free of charge, by replacing (at the sole discretion of Xiaoyan Tech) the defective device within the period of 15 days from the date of reception by the consumer, and by repairing the defective components of the device within the period of 12 months from the date of reception by the consumer.

*** The warranties may be varied in different countries and regions.**

The Warranty Applies to:

1. surface damages resulting from mishandling during transport or defects inherent in material or structure of the products;
2. failure of the buttons or indicator lights;
3. failure of wireless communication.

The Warranty Does Not Apply:

1. when the warranty period expired;
2. to damages resulting from repairing and introducing alterations by unauthorized persons;
3. to damages caused by using accessories not recommended by the manufacturer;
4. to damages resulting from other irresistible causes.